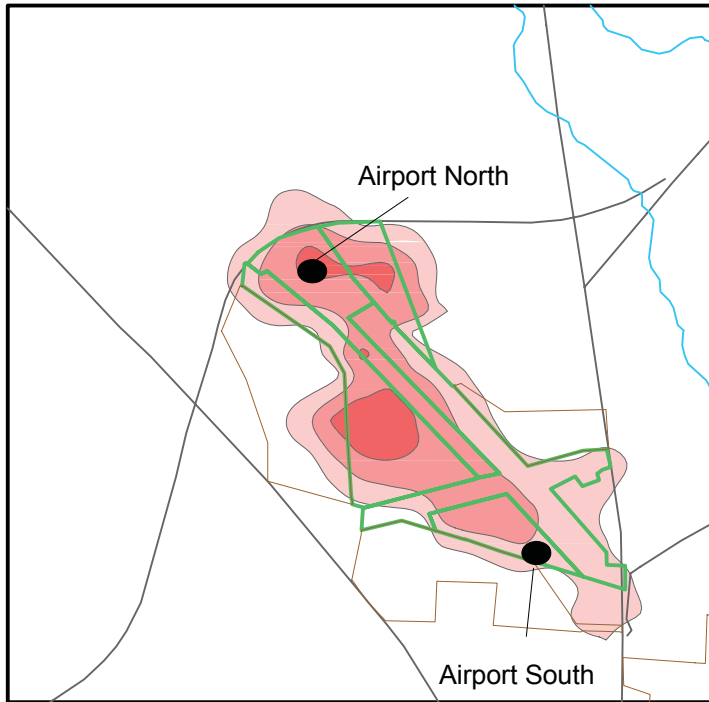
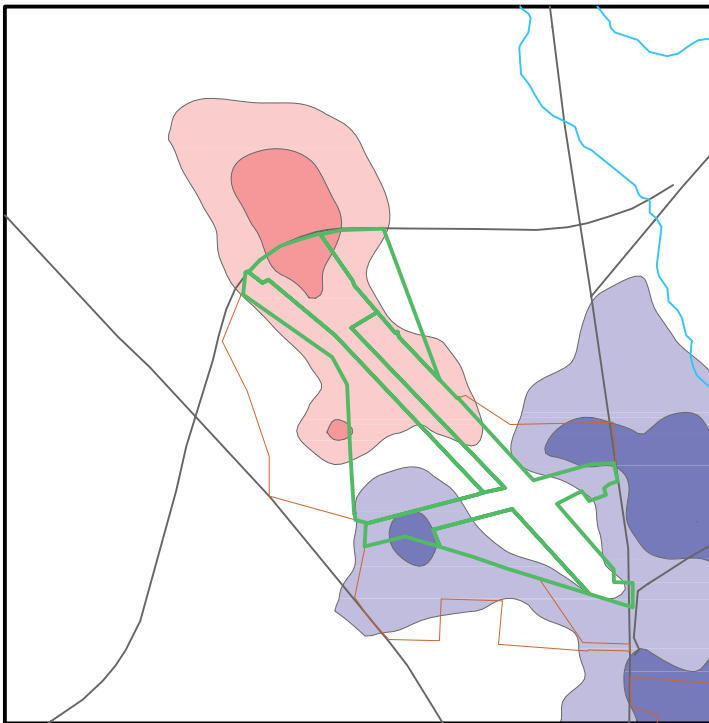


A. Change in Shallow Groundwater Salinity in Year 6 (2013) (mg/l)

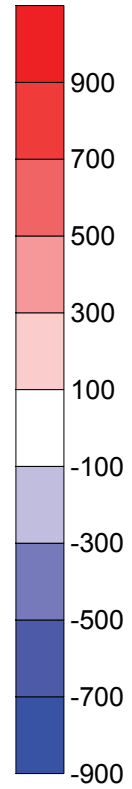


Hollister Municipal Airport

B. Change in Shallow Groundwater Salinity in Year 30 (2037) (mg/l)



Hollister Municipal Airport



 Project Site

Existing average TDS concentrations in groundwater in the area of the Airport site range from approximately 800 to 2,700 mg/L.

SOURCE: Gus Yates, 9/2007; AES 2007